



GAT MONTHLY MEMBERSHIP PROGRESS REPORT

Results as of: 7/31/2022

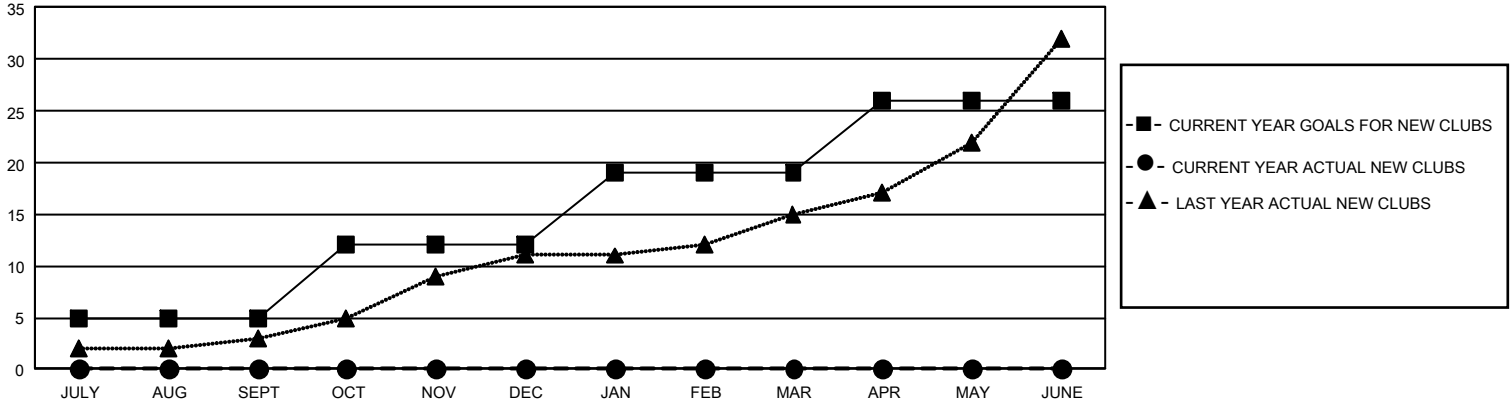
GMT Constitutional Area 3, Group E

REPORT DOES NOT INCLUDE CLUBS IN UNDISTRICTED AREAS.

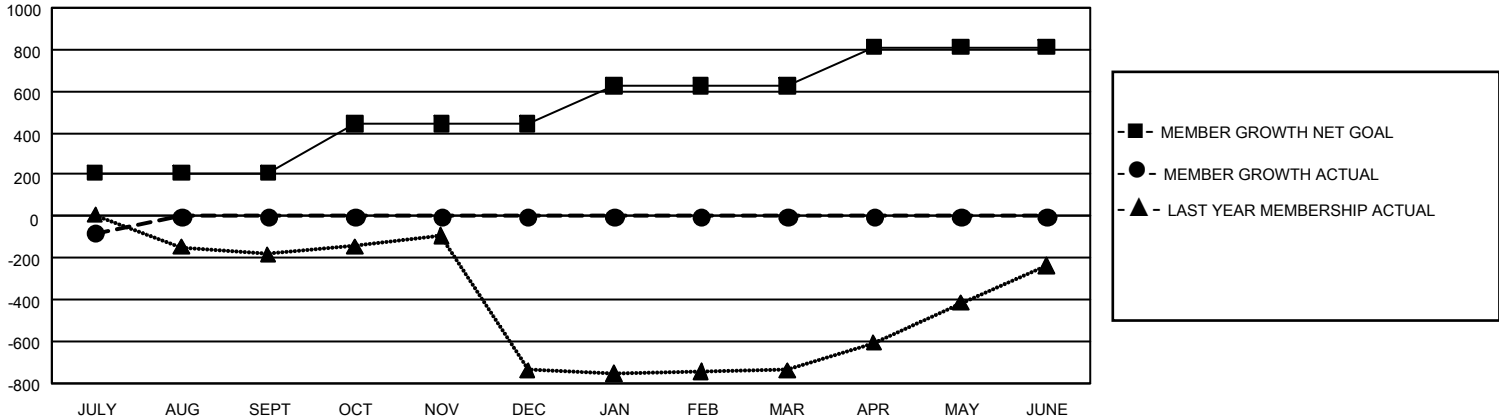
Clubs			
RESULTS FOR 2022-2023			
QUARTER	NEW CLUB GOAL	NEW CLUBS	DROPPED CLUBS
JULY/AUG/SEPT	15	0	4
OCT/NOV/DEC	21	0	0
JAN/FEB/MAR	21	0	0
APR/MAY/JUNE	21	0	0

Members			
RESULTS FOR 2022-2023			
QUARTER	MEMBER GROWTH NET GOAL	MEMBER GROWTH ACTUAL	DROPPED MEMBERS ACTUAL (including transfers)
JULY/AUG/SEPT	209	89	155
OCT/NOV/DEC	234	0	0
JAN/FEB/MAR	185	0	0
APR/MAY/JUNE	183	0	0

GOALS AND ACTUAL NEW CLUBS CUMULATIVE



GOALS AND ACTUAL MEMBERS CUMULATIVE



DROPPED CLUBS: 4 DROPPED MEMBERS DECEASED 4 CLUB CANCELLED 41 OTHER 110 TOTAL 155	32 CLUBS OF 363 ADDED 1 OR MORE NEW MEMBERS	GENDER DISTRIBUTION MALE 3,755 (44.66%) FEMALE 4,648 (55.28%) NON BINARY 0 (0.00%) PREFER NOT TO ANSWER 5 (0.06%)
	CLICK HERE FOR CUMULATIVE MEMBERSHIP DATA	TOTAL FAMILY UNIT MEMBERS 3,247 FAMILY MEMBERS PAYING HALF DUES 1,949